

AI SERIES COMMERCIAL BOILER

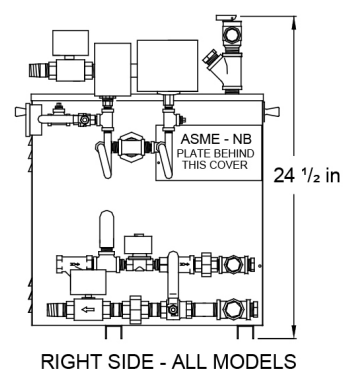
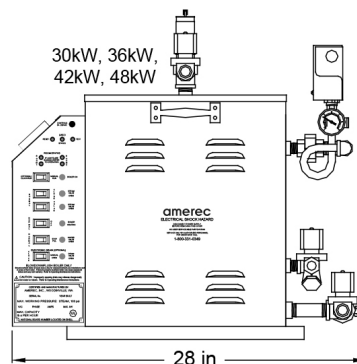
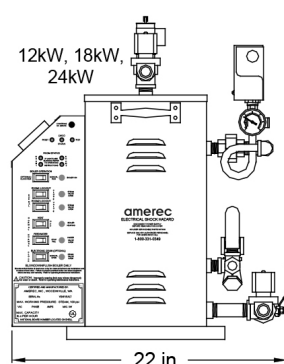
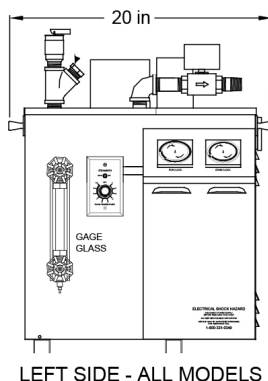
SPECIFICATION SHEET



Ideal for large steam rooms, the Amerec AI Series is designed for user enjoyment, ease of operation and long life. The AI boilers are engineered for easy on-site maintenance and hands-off, automated operation. Amerec engineering and technology incorporates several unique features, making the AI Series the ideal choice for large commercial steam rooms.

AI Series Boiler Features

- UL Listed, cUL Listed, tested to UL834.
- ASME H-Stamped Low-Pressure Vessel, National Board registered.
- Multiple safety features, including:
 - Sight Glass
 - Three-level water sensing system with integral LWCO (low water cutoff)
 - Control system per CSD-1
- Low Water Cut-Off (LWCO) with manual reset prevents heating should the water level drop below safe levels.
- Room “over-temperature shut down” turns boiler elements off and blinks indicators to show alarm.
- All steel construction with powder coat finish and stainless steel feet to prevent corrosion.
- Designed for easy serviceability: indicator lights with integral diagnostics, simple service access and control.
- One steam valve for single room operation.
- Two-room operation with each room controlled individually. Requires 2-room thermostatic control kit.
- CoolFlush™ Auto Drain option performs recommended daily draining and flushing to reduce sludge and scale build up:
 - Anti-vacuum drain system reduces gurgling noises and slow draining.
 - Drain clock allows system to start at desired time of day, whether the generator is on or off.
 - Cools water in tank to 140 F or less to prevent damage to plumbing drain system.
- Optional 24-hour and 24-hour / 7-day integral run and drain clocks.
- Optional “Refresh” control provides short bursts of steam on demand with a simple push button switch in side the steam room. Provides a 15 to 20 second burst of steam even if the room is at set temperature and does not call for steam.



Model	UL-Model #	Watts	Volts	Phase	Amps	Max. Room Size cu ft (cu M)	Steam Output lb/hr (kg/hr)
AI-12	12-208	12000	208	1	59	550 (14,2)	36 (16,3)
	12-240		240	1	51		
	12-208		208	3	34		
	12-240		240	3	30		
	12-415		415	3	18		
	12-480		480	3	15		
AI-18	18-208	18000	208	1	88	900 (25,5)	54 (24,5)
	18-240		240	1	76		
	18-208		208	3	51		
	18-240		240	3	44		
	18-415		415	3	27		
	18-480		480	3	22		
AI-24	24-208	24000	208	1	116	1200 (34,0)	73 (33,1)
	24-240		240	1	101		
	24-208		208	3	68		
	24-240		240	3	59		
	24-415		415	3	36		
	24-480		480	3	29		
AI-30	30-208	30000	208	3	85	1500 (42,5)	91 (41,3)
	30-240		240	3	73		
	30-415		415	3	44		
	30-480		480	3	36		
AI-36	36-208	36000	208	3	101	1800 (50,0)	109 (49,4f)
	36-240		240	3	88		
	36-415		415	3	53		
	36-480		480	3	43		
AI-42	42-208	42000	208	3	118	2100 (59,5)	127 (57,6)
	42-240		240	3	102		
	42-415		415	3	62		
	42-480		480	3	51		
AI-48	48-240	48000	240	3	117	2400 (68,0)	145 (65,8)
	48-415		415	3	70		
	48-480		480	3	58		

Notes:

- All models: no internal heating circuit fuses are needed
- All models use 120VAC 50/60Hz control circuits except 415V models use 240V 50/60Hz control circuits.
 - 208V and 240V models supply their 120V control circuit voltage internally. A 14AWG Neutral is required.
 - 480V models require a separate 15A 120V+N service for the control circuit.
 - 415V-N models supply their 240V control circuit voltage and neutral internally.
- Use only copper wire, rated 75°C or better.
- Install all wiring per local codes.

AI Series Boiler Controls and Options

MODEL DESCRIPTION

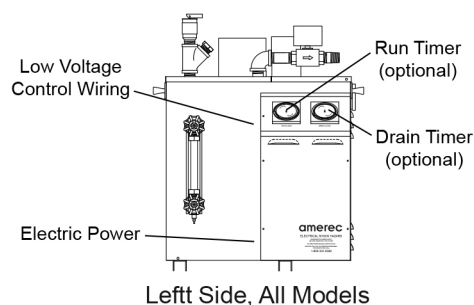
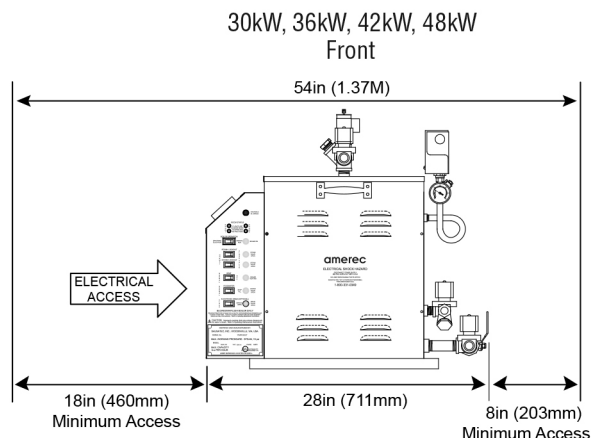
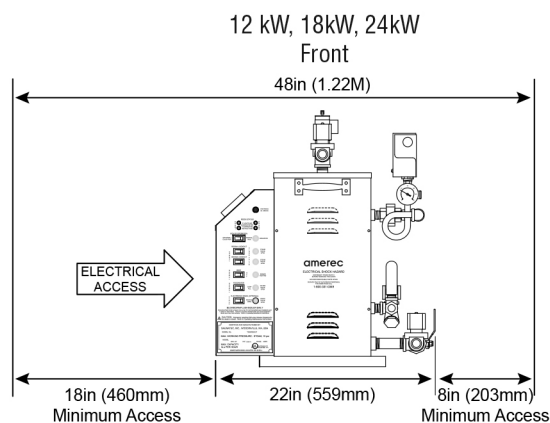
- IT1** Thermostat for 1 room installation. Required for all models.
- IT2** Second Thermostat for 2 room installations.
- ADI** CoolFlush™ autodrain and flush system
- ADI-D** CoolFlush™ autodrain and flush system with Digital Clock.
- IDS** In room "Refresh" control for a quick burst of steam on demand.
- I60** 60-minute timer to control steam in rooms with intermittent use.
- I24/7** 7-Day Timer with 2-hour on/off segments.
- I24/1** 24-Hour Timer with 30-minute on/off segments.
- D24/7** 7-Day Digital Timer.
- ASX-200** Dual cartridge Scale-X filter system.

AMEREC
575 E Cokato Street | Cokato, MN 55321
Toll-Free 1-800-331-0349
amerec@amerec.com | www.amerec.com

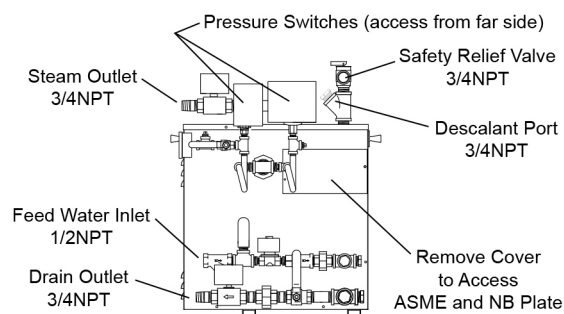
Amerec reserves the right to change specifications and design without notice.
© 2022 Amerec Steam

AI SERIES COMMERCIAL BOILER

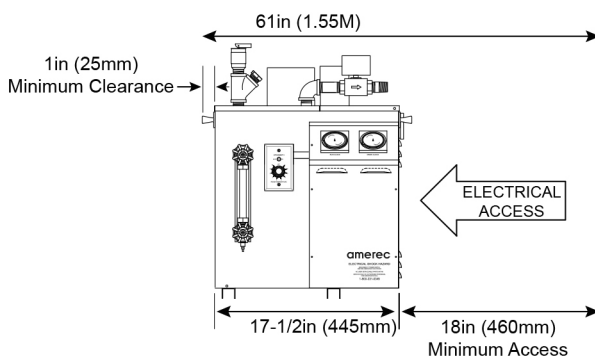
SPECIFICATION SHEET



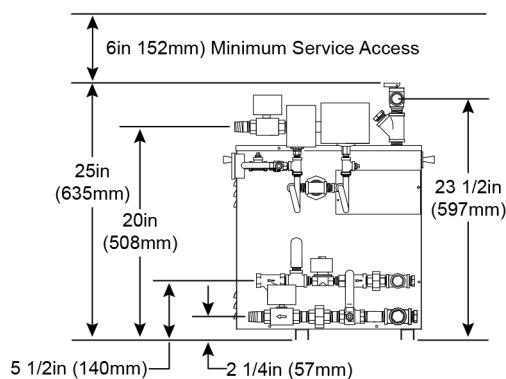
Left Side, All Models



Right Side, All Models
Shown with optional ADI CoolFlush drain



Left Side, All Models
Shown with optional Boiler Mounted Thermostat



Right Side, All Models
Shown with optional ADI CoolFlush drain



SEE COMPLETE INSTALLATION INSTRUCTION FOR WARNINGS!

AMEREC
575 Cokato Street E. | Cokato, MN 55321
Toll-Free 1-800-331-0349
amerec@amerec.com | www.amerec.com

Amerec reserves the right to change specifications and design without notice.
© 2022 Amerec Steam

07/22

amerec[®]
STEAM. SAUNA. SOLUTIONS.