



Vita II w/ SL2 Control Installation Guide



71-0175
Sauna360
4/13/2023

Please Immediately check for any hidden damage that may have occurred in shipping. If any damage is found, you must notify the delivering carrier within 7 days.

A few minutes with the following instructions will ensure quick and proper assembly, and many years of enjoyment and relaxation. By reviewing all the instruction steps ahead of time, you will have a better feel for the whole process.

Your sauna package will arrive on a stretch-wrapped pallet including a stack of pre-built panels, benches, and boxes with the heater, rocks and accessories.

Final Electrical connections should be performed by a qualified electrician.



Tools Required for Assembly

- Hammer or Pneumatic Nailer (recommended)
- Handsaw/Miter Box (for molding installation)
- Drill or Cordless Screwdriver
- Tape Measure
- Level
- Square
- Wood shims (for leveling base rails if necessary)
- #2 Phillips screwdriver or bit
- Torx bit (included in kit)

WARNING

Drilling, sawing, sanding, or machining cedar wood products can expose you to wood dust, a substance known in the State of California to cause cancer. Avoid inhaling wood dust or use a dust mask or other safeguards for personal protection. For more information go to www.P65Warnings.ca.gov/wood. Doc # 71-0147

Contents

Accessories/Interior Components	3
General Installation Information	4
Base Rail Assembly	5
Wall Panel Installation	6
Top Plate Installation	7
Electrical Assembly	8
Glass Panel and Door Installation	11
Ceiling Installation	13
Interior Installation	13
Mounting of Designer 4.5kw heater	19
Adding Exterior Trim	20
FAQ	21
Serial Number Recording Sheet	22

WARNING: When using electric sauna heaters and associated sauna products, basic precautions must be followed, including the following:

- ⚠ Grounding is required.
- ⚠ No electrical outlets shall be installed inside the sauna cabin.
- ⚠ Rocks must be placed inside the heater per the installation and operating instructions.
- ⚠ Do not tamper with the door or add a latching/locking system. This may cause entrapment.
- ⚠ Do not block ventilation openings.

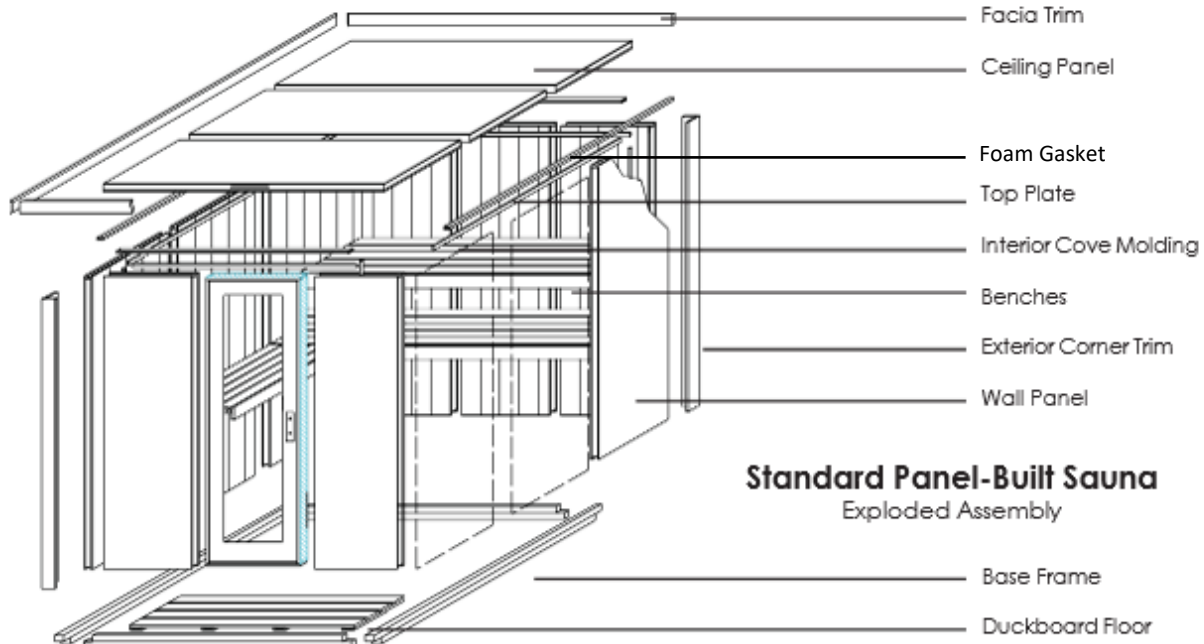
WARNING: Prolonged exposure to elevated temperatures is capable of inducing hyperthermia. Hyperthermia occurs when internal body temperature reaches several degrees above normal body temperature of 98.6°F. Symptoms of hyperthermia include an increase in the normal temperature of the body, dizziness, lethargy, drowsiness, and fainting. The effects of hyperthermia include failure to perceive heat, failure to recognize the need to exit the room, unawareness of impending hazard, fetal damage in pregnant women, physical inability to exit the room and unconsciousness.

WARNING: The use of alcohol, drugs or medication is capable of greatly increasing the risk of fatal hyperthermia.

CAUTION FIRE HAZARD: Do not use the sauna room for drying clothes, bathing suits, etc. Do not hang towels above the heater or place any object, other than the rocks supplied, in the heater. If any darkening of the wall around the heater is noticed, discontinue sauna use immediately.

Accessories/Interior Components

Duckboard Flooring	
Lower Bench/Platform & Upper Bench Seat	
Backrest/Bench Skirt (identify by label on back of each)	
Lower Bench leg – Adjustable	
3-sided heater guard (needs assembly)	
Lower bench support	
Interior Cove Moulding (cut to fit)	
Exterior Facia Trim (cut to fit)	
Corner trim cap (x3) (pre-cut to length)	
Foam ceiling gasket (roll)	
Hardware Pack (subject to change)	
2-1 Splitter for LED lighting	



Standard Panel-Built Sauna
Exploded Assembly

Note: Base rail, top rail and trim are all labeled.

*Parts depicted in the diagram will differ between models.

Installation of Sauna Room

If the sauna is to be placed against existing walls, panel installation should begin away from the wall starting with the right panel. After these panels are all in place, the sauna can be slid back towards the walls, keeping 1" separation from the wall and sauna for proper ventilation and air circulation. Consideration of electrical service entry must be made as well. Typically, electrical power is brought into the sauna on the back wall or near the back wall on a side panel. You may want to coordinate this with your electrician before installation of the benches is complete. Doing so after the interior is installed will increase the level of difficulty for the electrician.

Your sauna can be placed on concrete, tile, vinyl, or any other "solid" surface that does not absorb water. Do not install the sauna directly on a carpet surface! When installing a finished hardwood floor, it is recommended to lay down a sheet of vinyl flooring under the sauna base rails to protect the hardwood floor from damage.

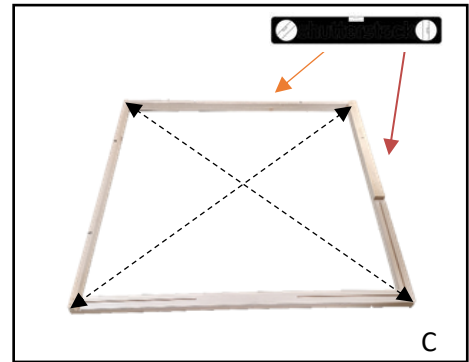
NOTE: The tongue and groove on the panels will always face the same direction.

- ⚠ Each panel is heavy. Use caution to avoid injury when installing, especially the ceiling panels and glass.
- ⚠ A minimum of 2 adults are required for the installation of this sauna room.
- ⚠ Only a qualified electrician should connect electrical service to your sauna.

Base Rail Assembly

1. Position the base frame in the desired location on a level surface. The largest number on the base frame is the door location. The stamped numbers on the base frame should be readable from inside the room. (Photo A)
2. Fasten the corners of the base frame using a 3" screw at each corner in the pre-drilled holes. Pre-drilled holes are purposely made at an angle. (Photo B)
3. The base rails are numbered to correspond with the wall panels. (Ex: Panel 4 will fit directly over base rail location #4)

NOTE: Using a level and measuring tape, confirm the base frame is square by measuring corner to corner. The dimensions should be the same when the base is square. Shim where needed to level the base. This is extremely important to ensure proper fitment of the glass panels and glass door. (Photo C)



Wall Panel Installation

Note: The perimeter of the floor is labeled with Reference numbers that will correspond with each wall panel.

- Starting with a back wall corner panel, position a wall panel over its corresponding numbered location on the base rail and hold in place. (remove protective foam block from bottom of wall panel before placing on base rail).

- Next, carefully lower the perpendicular side wall corner panel into the base rail, starting at an angle and sliding it into place.

NOTE: For ease in installing the panels, tilt the top of each panel back to get the tongue and groove alignment started. Then tilt forward for an easy fit. (Photo D)

- Make sure that the wall panels are flush with each other at the top and fully seated onto the base rails at the bottom.

- Ensure that the two corner back wall panels are flush for the entire length (base to top) and locate the pre-drilled holes and use the supplied 3" screws to secure the two panels together. (Photo E)

- Continue placing additional panels, being careful not to damage the tongue & groove pieces of the panels. Remember to angle the wall panels then slide them into place so that the length of the tongue is seated firmly and evenly into the entire length of the groove.

- Secure each of the adjoining wall panels at the top using a 3" screw (Photo F)

NOTE: A rubber mallet or wood block and standard framing hammer can be used to make sure that the bottoms of each panel are even with the corners of the base frame. Be careful not to damage the panels when using this technique.

- Secure the remaining back corner panels together using the pre-drilled holes and supplied 3" screws.



11. Position the half wall (knee wall) over its matching numbered location on the base rail and slide securely into place. Make sure the window/glass grooves are aligned perfectly with the sidewall groove. (Photo G)

NOTE: If the knee wall does not fit perfectly, check that the base rails are level and use shims to correct as necessary.

12. Secure the knee wall to its adjoining wall with 3" screws, driven into pre-drilled holes at an angle. Cover the access with the included T&G panel using pin nails to secure. (Photo H)



Top Plate Installation

NOTE: Before installing top plates, ensure that all panels are fully connected on top and on the corners.

13. Install the back top plate first. Matching the numbered top plate to the corresponding wall panel number. Install this plate with the notched ends facing up. (Photo I)
14. Install the left and right wall top plates with the notches facing down and inter-locking with the notches in the back top plate. (Photo J)
15. Firmly press down (use hammer if needed) until the top plates rest on the framework of wall panels.
16. Top plate should be flush with the interior Tongue & Groove paneling.
17. Secure the top plates using the 2" Torque screws (included). Install one screw in each corner and one screw in the center of each wall panel. (Photo K)
18. Apply strip of foam ceiling seal over the top plates.



NOTE: Before installing any of the glass, it is advised to install the CB16 Contactor box and make all of the electrical connections EXCEPT the final connection to the heater. Energizing the circuit should also wait until completion of the project.

Electrical Assembly

Before installing the interior benches, mount the CB16 Contactor Box on the back wall, 3.5" from the floor and 10" - 12" from corner of wall. (use scrap 2x4 material to easily set height of CB Box) The CB Box should always be mounted to the same side of the sauna as the location of the heater. The area shown in the red circle, next to the CB Box is a safe place for the electrician to drill for bringing in the electrical service. Anywhere on the opposite side of the CB Box is also safe to use. (Photo L)

- 19. Route the 8-pin RJ45 cables for lighting into the CB Box and connect both cables to the 2-port splitter included in your accessories box. Connect the single RJ45 plug from the splitter to the RJ45 socket in the CB16 Box. (Photo M)

NOTE: One of the RJ45 lighting cables is pre-installed in the back wall for the backrest lights. The other RJ45 cable, found in the accessory box will supply power to the bench skirt at a later step.

NOTE: The 2-port splitter can be tucked into the open space near the circuit board. (Photo M)



K



L



M

20. Locate and route the RJ11 Control Cable, coming from the back wall and plug it into the RJ11 Control Port in the CB16 Box. (Photo N)

NOTE: the lights use the larger chrome port, and the control will use the smaller black port.

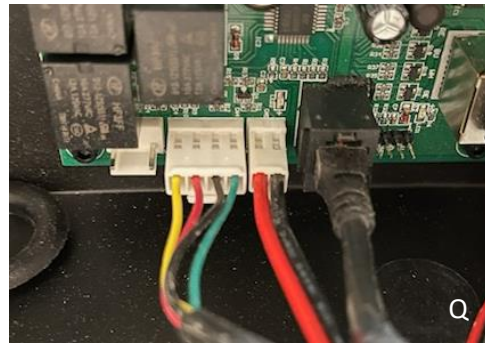
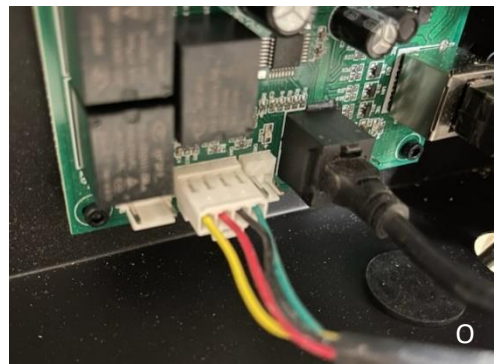
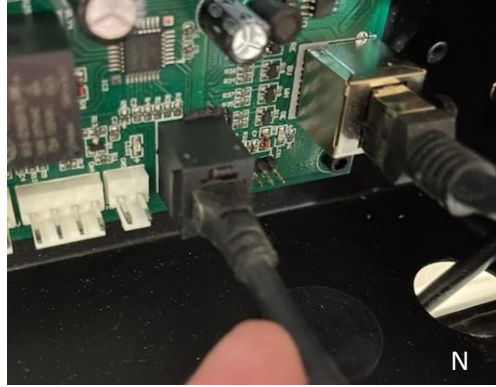
21. Locate and route the 4-pin Temp Sensor Cable with the flat, white connector into the CB16 Box and plug into the appropriate connector as shown in photo O.

NOTE: This cable will be coming out of the side wall panel

NOTE: The Temperature sensor should be pre-installed at the factory.

HINT: Performing the next 2 steps will make final heater installation much easier. If you wait until after the interior benches are installed, it will be much more difficult due to limited access space available.

22. Remove the Designer 4.5kw heater from it's packaging. Locate and remove the red/black high limit cable from the heater. You will need to open the heater's electrical access panels to do this. The cable you want is shown in Photo P.
23. Plug the white end of this cable into the 2-pin port in the CB16 Contactor Box. The open end of this cable will be re-installed in the heater in a later step, after you have installed the lower bench platform. (Photo Q)



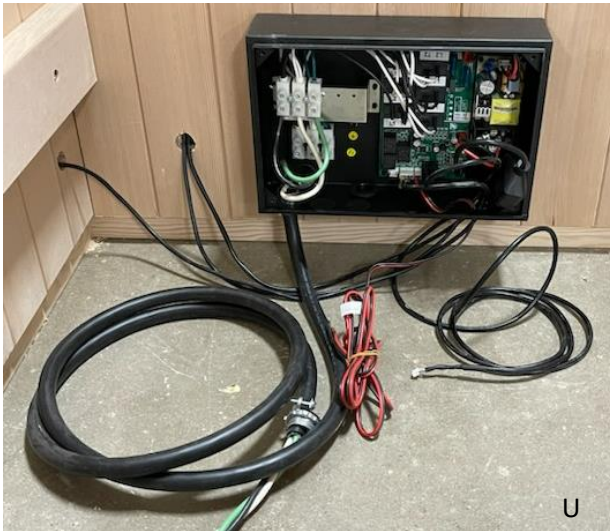
24. Locate the coil of heavy electrical cable with cable clamps attached to each end. (Photo R)



25. Insert one end of this cable into the left most grommet opening in the bottom of the CB16 box and secure with the cable clamp nut. (Photo S)



26. Strip back about ¾" of insulation from each of the 3 leads and insert them into the "T1, T2 and GND" terminals as shown in photo Q. Tighten the clamping screws on each terminal. (Photo T)

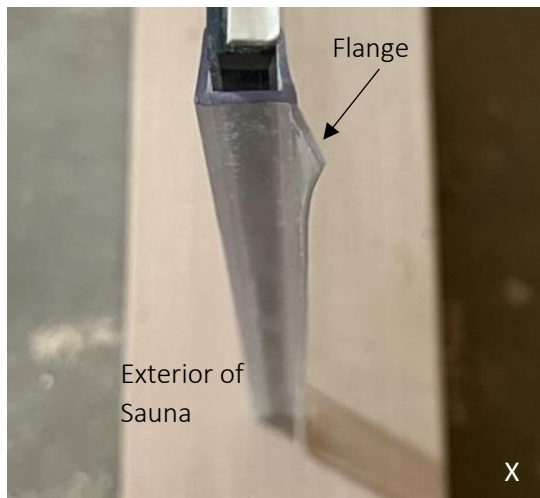


When you have all of the wires connected, you can move on to interior bench assembly, but you may want to have your electrician come in at this point and install the main electrical service to the CB16 Box. **HOWEVER, do not energize** the service until the sauna is fully assembled and ready to test with the heater connected!



Glass Panel & Door Installation

27. Place the small glass panel first. This panel will sit above the knee wall. Hold the glass at a slight angle and place the front corner of the glass into the slot in the top of the knee wall. Align the rear of the glass into the slot on the wall panel and carefully drop the glass into the groove so it is fully seated in both grooves. (Photo V)
28. Place the adjoining corner glass panel next. Slide the clear corner gasket onto the large glass panel so that it will be flush with the top of the window sill when joined to the shorter glass panel. Using the same technique as the small glass, hold the glass at a slight angle and set the bottom corner into the wood slot in the bottom of the frame then carefully tip the panel towards the corner glass joint until the two panels align with each other. (Photo W)
29. Add the "h" gaskets to the hinge side of the glass panel so that the flange is orientated to the interior of the sauna, as shown below in photo X.



30. Install door hinges to the stationary glass panel as shown in Photo Y. The articulating portion of the hinge should swing out of the sauna, not inward. Be sure to install the included gaskets on both sides of the glass. Snug the screws to hold in place with final tightening being done when the door is installed and after adjustments have been made.



31. With a helper holding the glass door panel in place, Attach the door panel to the 3 hinges. Notice that the helper is using a foot to hold the door in position. The door should have about a 1/4" reveal at the bottom of the door sill. Final adjustments can be made after the front ceiling panel is installed so that the top of the door (top gasket) over-laps the door stop block on the ceiling panel.



32. Install the door handle. Make sure to use the included gaskets on both sides of the glass. The handle with the tapered plug goes on the outside of the door. Once this is tightened, the interior handle can be slipped over the tapered plug and the 4 set screws tightened. (Photo AA)



Ceiling Installation

33. With a helper, place the rear ceiling panel on top of the wall panels first. Be very careful to avoid crushing the exposed control cable on the rear wall panel. This cable must be routed up and through the pre-drilled hole in the rear ceiling panel. Next, install the front ceiling panel. Tip the panel so the tongue and grooves line up first then carefully drop the front of the ceiling panel down so the two corner glass panels line up in the wood slot in the ceiling panel. (Photo BB)

NOTE: Final adjustments of the glass door can be made at this time.

34. Lock all ceiling panels down by driving 3" screws into the pre-drilled holes in both panels. (Photo CC)

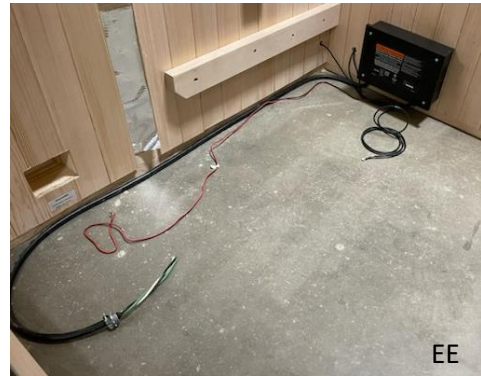


Interior Installation

35. Install the long lower bench support. Align the top of the support with the pencil line from the factory. Use a level to ensure that it is perfectly level. Secure to the wall with four 3" Torx screws. (Photo DD)



36. Uncoil the heater power and high limit cords and extend them to the front of the sauna. (Photo EE)



37. Install the adjustable leg to the “wing” on the bottom of the lower bench. Pre-drill 2 holes diagonally to each other and drive two 3” screws as shown in Photo FF. Exact alignment of the leg is not critical, but it will look best if centered in the open pocket.



38. Tip the lower platform with the “wing” facing up and carefully maneuver it into the sauna so you can turn it into the correct orientation. (Photo GG)



39. Set the rear of the platform on the lower bench supports and carefully tip the platform forward while simultaneously sliding the platform under the upper bench supports. (Photo HH, II)

NOTE: If the lower platform has a tendency to slide back/forth when in use, you may wish to add a single 3” screw



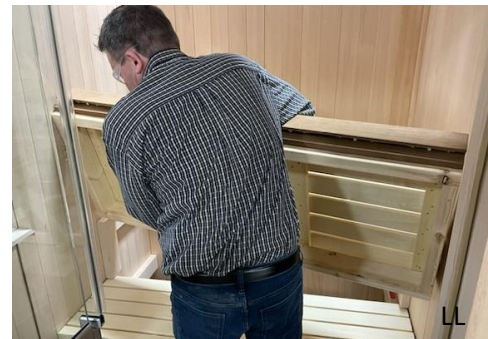
40. Lay a level on the long portion of the “wing” and adjust the foot on the bottom of the front leg until the bench sits level and the adjustable foot is in contact with the floor surface. Use an 11/16” wrench. (Photo JJ)



41. Pick up the upper bench with the darker accent to the top and carry into the sauna as shown in photo KK.



42. Carefully rotate the bench and set the back of it on the top bench supports. Slide the bench back all the way. (Photo LL)



43. Tip the upper bench up and insert the extra LED light cable through the pre-drilled hole in the back of the bench frame. (Photo MM)



44. Pull a couple of inches through the bench front and attach the 5-pin white plug to the first LED strip connector. Make certain that the plug is fully inserted into the LED strip connector. (Photo NN)



45. Place the backrest against the back wall so it is upside down and above the pre-installed LED wire connection. Plug the cable into the first LED, just like you did in step 45. (Photo OO)



46. Rotate the backrest towards you and position approximately 20" off the bench surface to the top of the backrest. The important part here is to make sure the wire access hole is completely hidden behind the backrest. Hold level and screw to the back wall using the hardware that was attached to the back of the backrest. (Photo PP)

HINT: use scrap wood cut to length (approximately 6.5") to temporarily position the backrest exactly perpendicular to the bench surface.

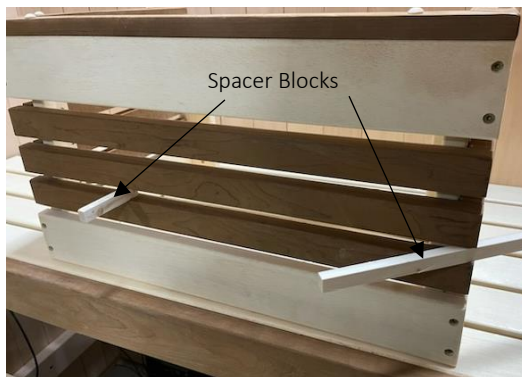


47. Assemble the 3-sided heater guard using the hardware it came with. (Photo QQ)



48. Position the heater guard so it is $\frac{1}{4}$ " from the front glass and $10 \frac{1}{4}$ " from the top of the knee wall sill. (Photo RR)

HINT: Placing $\frac{1}{2}$ " spacer blocks in between the wood bars of the heater guard will ensure a perfectly square alignment to the lower platform when you set the guard in place. Discard blocks after mounting guard to wall.



49. Secure the guard with the included 2" screws. (Photo SS)

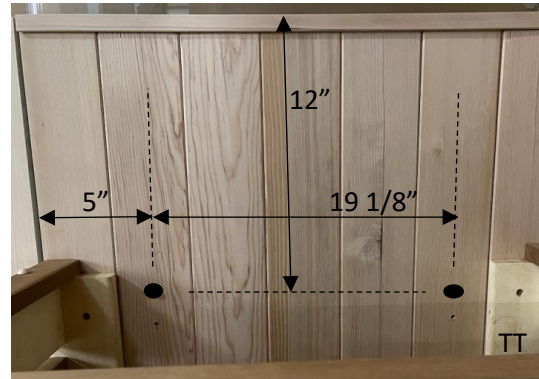


Mounting of Designer 4.5kw Heater

50. Pull the two heater cables up through the heater guard and connect them to the heater. For specific wiring instructions, please consult the installation manual that was included with your new heater. (Photo TT)
51. Drill two 3/16" holes at the exact locations shown. (5" from glass front, 19 1/8" from first hole and 12" down from knee wall sill) If your knee wall came pre-drilled with heater mounting holes, you can skip this step.
52. Install two of the longer lag bolts, included with the heater hardware pack, into the two holes you just drilled. Screw in so there is about 1/8" of the bolt extending out of the wall surface.
53. Hang the heater on these two screws using the "keyhole" openings on the heater brackets. Use a 10mm wrench to tighten the lag screws. (Photo UU)

NOTE: it is very difficult to add lower mounting screws but if you wish to do so, you may reach under the lower platform and drive a 2" wood screw through the wall mount bracket and into the T&G. This is not necessary to do but it is an option you may wish to add.

54. Set the duck board flooring into the open walk space in the sauna. (Photo VV)



(3/16" holes shown larger than actual for clarity)



Adding Trim	
<p>55. Locate the corner trim pieces and match the numbered corner trim to the corresponding numbered sauna frame corners. Position each corner trim piece into place so the T&G has an even reveal top to bottom. Secure with trim nails</p> <p>56. Locate the top facia trim pieces and cut the two side pieces to length first so they are flush with the front and back of the sauna. Secure with trim nails.</p> <p>57. Cut the remaining piece of facia trim so it is flush with the outside of the two facia boards installed in step 56.</p> <p>58. Cut to length the interior ceiling trim (cove molding) pieces, starting with the back wall and then the two side walls. Secure them with trim nails.</p> <p>59. Lastly, if all components are set as you want them, add the wood trim buttons to all interior components (Backrest, Bench Skirt and heater guard). The buttons should “press-fit” into the holes but as the wood shrinks it may be necessary to add a small amount of wood glue to keep the buttons in place.</p>	

For instructions on installing the SL2 Sauna Control, heater start-up procedures and connecting to Wi-Fi, please consult the installation manuals that came with your heater and control.

If you purchased the optional Bluetooth Soundbar®, the installation and use instructions will be included in the Soundbar packaging.

Frequently Asked Questions

CLEANING

Yes, cleaning is needed! Perspiration and dirt may absorb into the wood so periodic cleaning is needed. Scrubbing the benches and floor boards with a stiff brush and mild detergent is normally sufficient. Light sanding with 220 grit sandpaper can also be used for heavy staining or water marks.

INTERIOR PAINT OR STAIN

You should never apply any paint or stain to the interior of your sauna! Off-gassing from these products could be harmful to your health when the room is heated. Exterior finishing is not necessary but you may do so if you wish.

The only approved product to use on the interior of your sauna is 100% pure Paraffin Oil. Pure Paraffin Oil is odorless and will add an invisible layer of protection from moisture stains to your bench, backrest, heater guard and duckboard flooring. Initial application will darken the softwood, but this will lighten over time and use. Re-application may be necessary depending on the amount of use the sauna gets. See your sauna retail dealer for details.

PATCHING NAIL HOLES

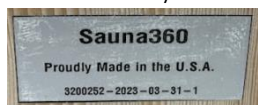
Small nail holes from attaching your trim can be easily filled by using a quality brand of wood filler that matches the wood you are using followed by a light sanding with 220 grit sandpaper. Small holes or cracks in the wood can also be filled by filling the void with white wood glue and sanding with 220 grit sandpaper before the glue dries. The sanding dust will stick to the glue and create a nearly invisible patch.

DO I NEED A FLOOR DRAIN IN THE SAUNA?

The short answer is no. A floor drain is not necessary in an indoor sauna but having one will facilitate cleaning. Under normal use, only small amounts of water are poured over the sauna rocks, which quickly turn to steam and are absorbed by the sauna. Never install your sauna directly over a carpet surface.

WHAT DO I DO IF I NEED SERVICE?

Your first step should be to contact the dealer you purchased your sauna from. They will need to know the serial number of your sauna and a detailed description of the issue. If they can't resolve the issue, they will contact Sauna360 Technical Support for assistance or parts. Your serial number can be found on the inside of your sauna, directly under the inlet vent located under the sauna heater.



If you have any questions during the installation of your sauna, please contact your local dealer.

Record your room and heater serial numbers here for future reference.

Sauna Room Serial Number	
Heater Model	
Heater Serial Number	
Date of installation	
Dealer purchased from	

Enjoy Your Sauna!

Follow Finnleo (@Finnleosauna) on social media. Tag Finnleo & include #MyFinnleo for a chance to be featured on our page.



<https://www.finnleo.com>



575 Cokato Street East., Cokato, MN 55321